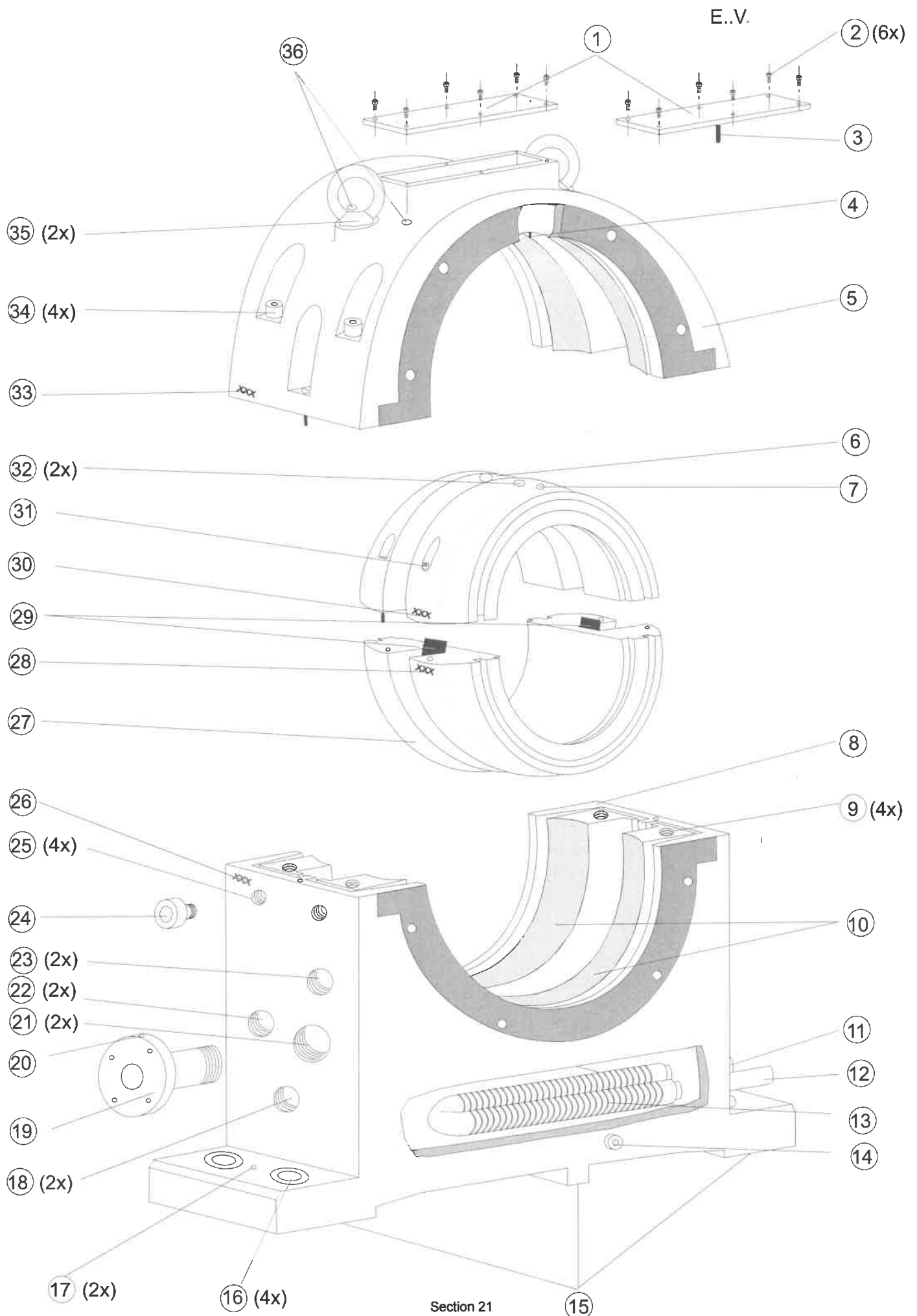
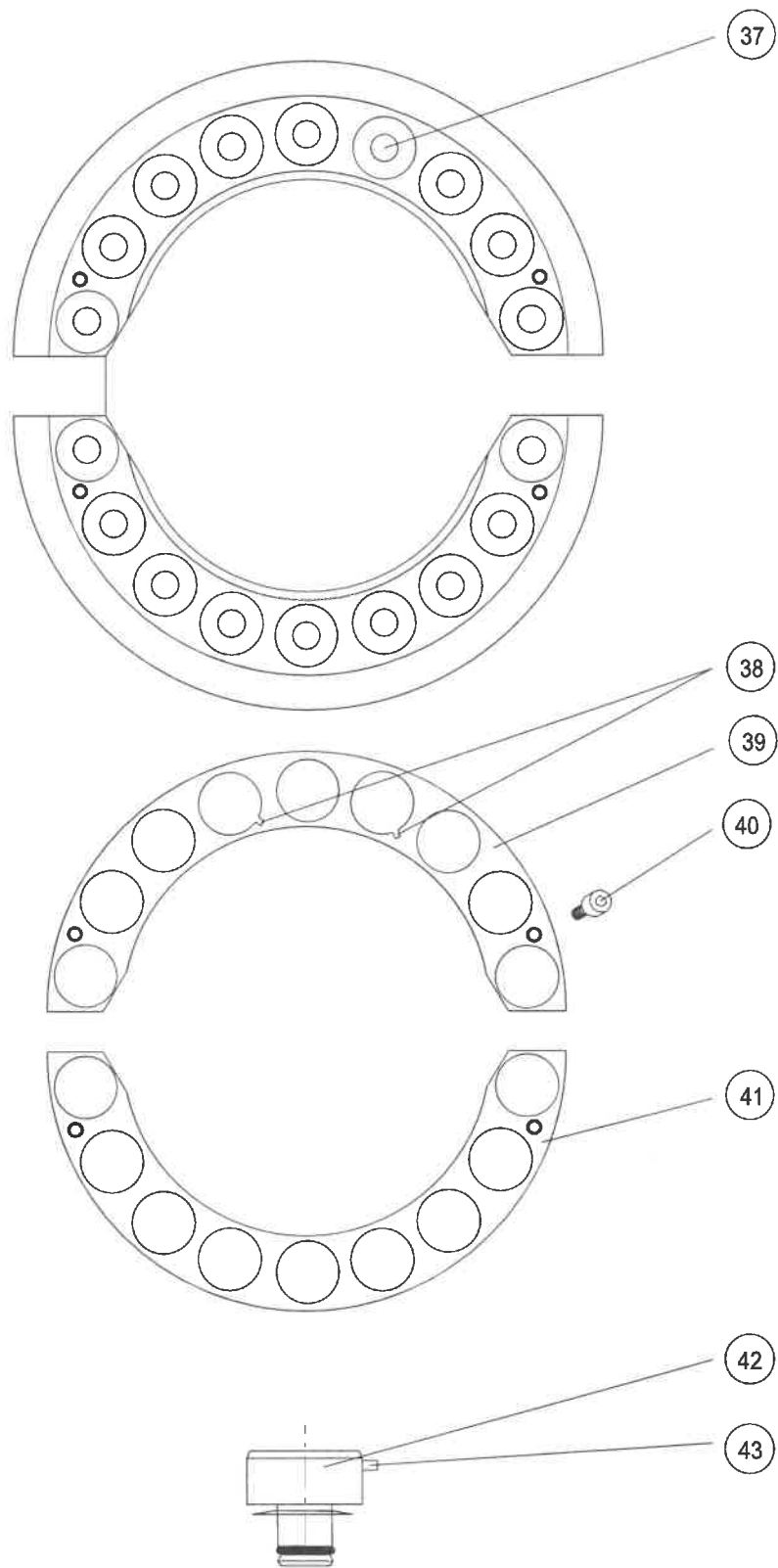


**General Drawing of the  
EG, ER Slide Bearings  
with external oil supply**



- 1 Top sight glass
- 2 Screw
- 3 Positioning pin
- 4 Positioning pin
- 5 Housing - top half
- 6 Shell - top-half
- 7 Hole for positioning pin
- 8 Housing - bottom-half
- 9 Tapped hole
- 10 Spherical surface
- 11 Cooling water inlet or outlet (Type E.T..)
- 12 Cooling water outlet or inlet (Type E.T..)
- 13 Cooler (Type E.T..)
- 14 Hexagon head plug (Oil drain plug)
- 15 Foot plate (Type ER...)
- 16 Foot plate holes
- 17 Hole for dowel pin
- 18 Tapped hole for oil sump temperature measurement
- 19 Oil outlet pipe with special pipe nut and lead seal
- 20 Marking (Type E..L.)
- 21 Tapped hole for oil outlet connection
- 22 Tapped hole for journal bearing temperature measurement
- 23 Tapped hole or oil inlet connection
- 24 Scew plug
- 25 Tapped hole for thrust part supply (optional)
- 26 Engraved number
- 27 Shell - bottom part
- 28 Engraved number
- 29 Metal tab (optional for E.ZLA )
- 30 Engraved number
- 31 Screw (split line of the shell)
- 32 Tapped hole (shell-top and bottom halves from size 14)
- 33 Engraved number
- 34 Screw (split line of the housing)
- 35 Eye bolt
- 36 Tapped hole for thrust part temperature measurement (optional)

**General Drawing of the  
Thrust Part with Circular Tilting Pads  
(RD-Thrust Pads)**



- 37 Carrier ring
- 38 Location groove
- 39 Shroud ring top half
- 40 Screw
- 41 Shroud ring bottom half
- 42 Circular tilting pad (RD-thrust pad)
- 43 Anti - Rotation pin